

Royal Greenwich Sensory Service

Soemaya Elmi,
Teaching Assistant &
Trainee BSL Teacher

Tina Dhunday,
Deaf Instructor & BSL Teacher



BSL Lesson: -



4x Mainstream classes

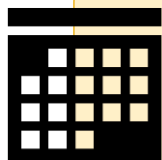


30 children in each class
(Inclusive of Deaf children)



Teaching Duration: -

20 / 30 minutes



2022/2023 - First trialled the draft Primary BSL Curriculum in
Year 3 and Year 5 classes.



Using Topics/Themes from the National School Curriculum we selected appropriate features and Deaf Themes from the BSL Curriculum to support learning.



Topic:- Varjak Paw

Y3

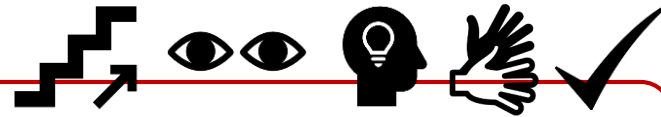


Y5

Topic: - London Landmarks

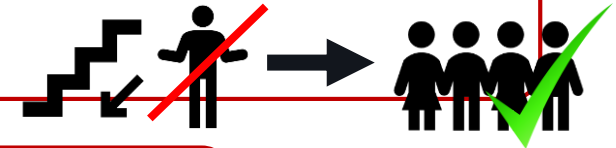
Aims: Inclusion

Implementing the BSL Curriculum in this mainstream school, where there is an established Deaf Centre and Deaf children and Staff present, demonstrated the benefits and aims that are listed below:

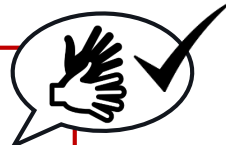


Increase and develop understanding and awareness of communication methods and communicating in an appropriate way.

Reduce social and educational isolation of Deaf Children.



Communicate efficiently when peers/staff approach each other.



Interact with Deaf children during classroom activities, social activities and those that extend outside of school.



Create more inclusive environments, allowing children to independently express alongside their peers and build rapports with their peers.



Increase conversational skills in all children, and staff, as teachers are present in the BSL lessons.



Access and receive another rich language as part of their education alongside Modern Foreign Languages (MFL's).



2022/2023 - Video-clips

Hearing children's opinions about BSL Lessons

