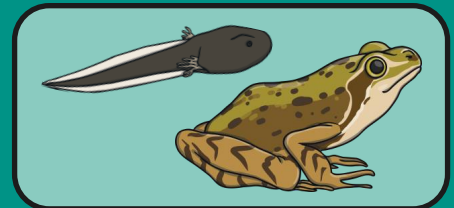
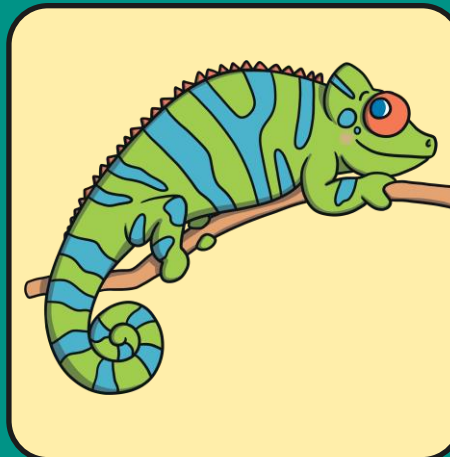
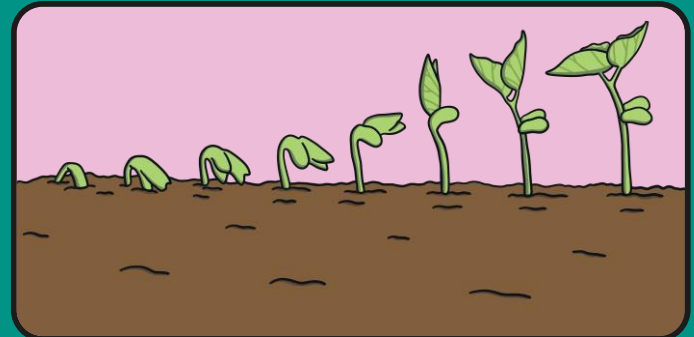
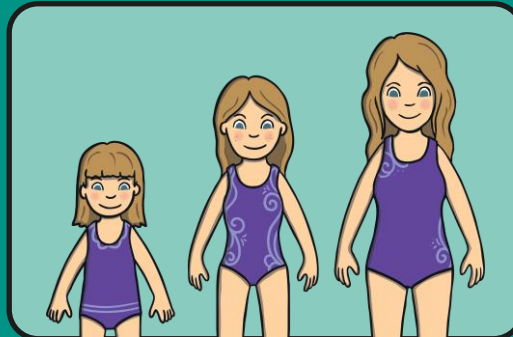
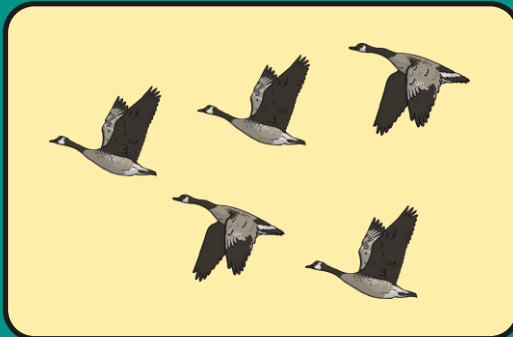


British Science Week

7th – 16th March 2025



Why Celebrate Science?

Science is about understanding and making sense of the world around us. It allows us to be creative and curious, as well as being able to answer questions that we may have.

Why do we get different seasons?

How do animals survive in different environments?

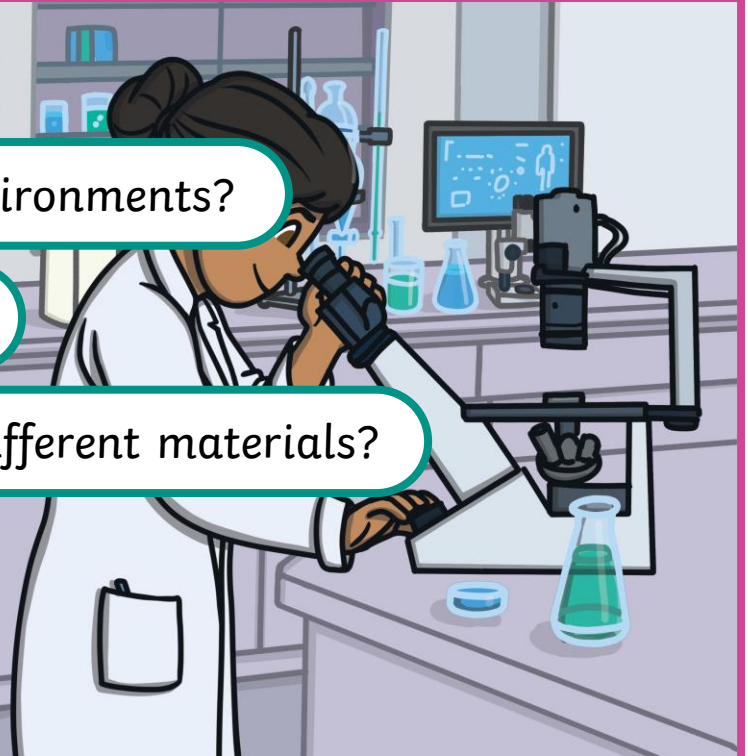
What do plants need in order to grow?

How easily can I change the shape of different materials?

What causes a rainbow?

Why does an ice cream melt?

So, let's celebrate everything science!



Change and Adapt

Last year, British Science Week celebrated its 30th birthday! This year, to celebrate the start of a new era with fresh ideas, the chosen theme is 'Change and Adapt'.

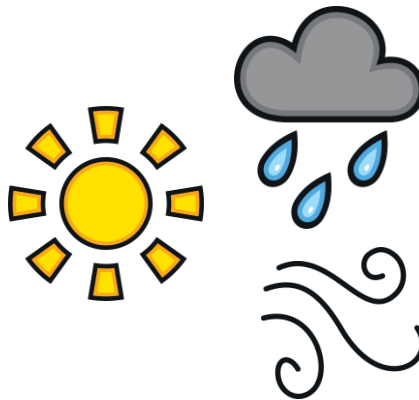
Let's think...

What examples of change can you think of?

It could be a change into different clothes.



It could be a change in the weather.



It could be a change in where somebody lives.



Change and Adapt

What do the words 'change' and 'adapt' mean?

When something **changes**, it becomes different from or replaces what it was before.

For example, if you **changed** your hairstyle, it would be different from what it looked like before.



When something **adapts**, it changes to become more suitable for a new use, situation or environment.

For example, if a ramp or lift has been installed alongside the stairs in a school, the school has been **adapted** so that all people can access all areas of the building.

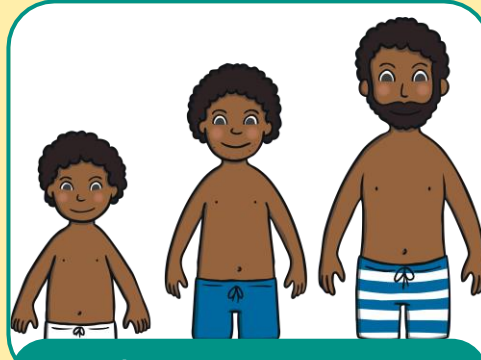


'Change and Adapt' within Science

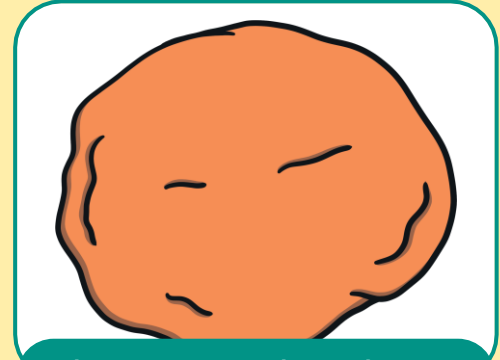
Here are a few examples of changes within science.



the changing seasons



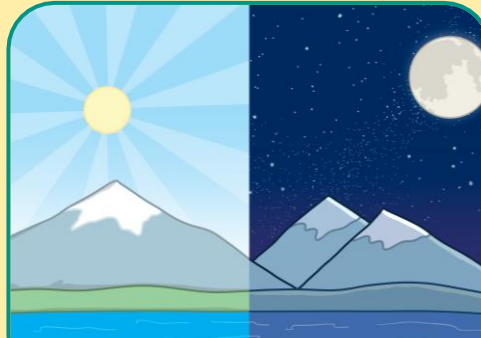
changes as we grow up



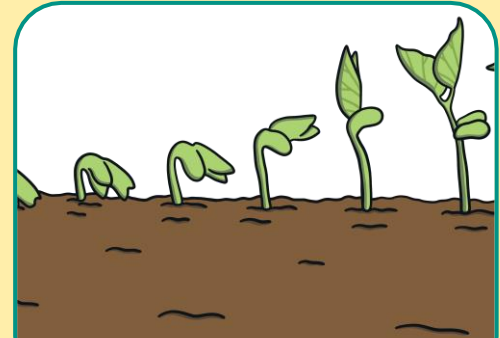
changing the shape of materials



changes between adult animals and their young



day and night



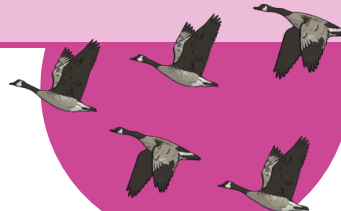
changes in plants as they grow

Exploring 'Change and Adapt' This Week

Changing and adapting are very important areas of science. This week, you might explore questions such as:



- What causes the changes in the seasons?
- Why do we change our clothes for different types of weather?
- Why does ice cream melt?
- Why do certain animals change where they live at certain times of the year?
- How can we investigate changes in colour?
- What changes could we make to our local area to help the environment?



What other ways can you think of to explore changing and adapting?

'Change and Adapt' When Working Scientifically

Here are some ways that 'change' features when we work scientifically.

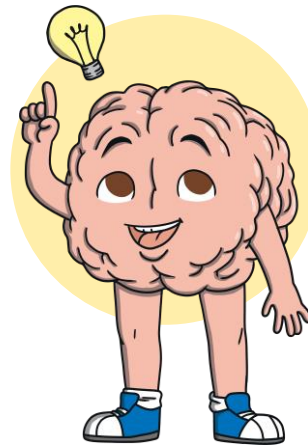
We may observe how things **change** over time.



In a comparative test, we **change** one thing and keep everything else the same.



Your understanding of something may **change** based on your results.



Over to You!

Monday - Friday

Each class will have a Science Day.



You will all be investigating and experimenting.

We will all visit each class on different days at 2:15pm.



When we come to visit your class, you will need to deliver a presentation about your science experiment and results.



Plan for the Week:



Monday – Ice Age Class



Tuesday – Jurassic Class



Wednesday – Ancient Egypt Class



and (Tudor Class trip to Heathlands)

Thursday – Roman Class

Friday – Tudor Class



Over to You!

Science Experiments for 'Change and Adapt'

Ice Age Class = Light and Reflections

Ancient Egypt Class = Colour Changing Flowers

Jurassic Class = Magic Milk and Rain Clouds

Roman Class = Which sugars melt ice the fastest?

Tudor Class 1= How does milk change to cheese?

Tudor Class 2= Surprising Stains (Chemistry & Materials)

Monday 10th March – Ice Age Class

“Reflection and Light”





Tuesday 11th March – Jurassic Class

“Magic Milk and Rain Clouds”

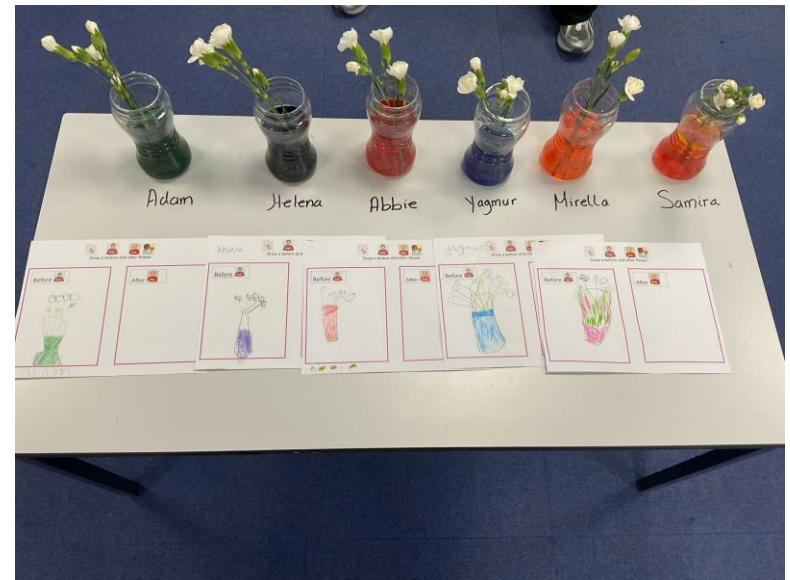




Wednesday 12th March – Ancient Egypt Class

“Colour Changing Flowers”





Wednesday 12th March – Tudor Class

Science Collaboration Trip with Heathlands and Blanche Nevile Schools





Thursday 13th March – Roman Class

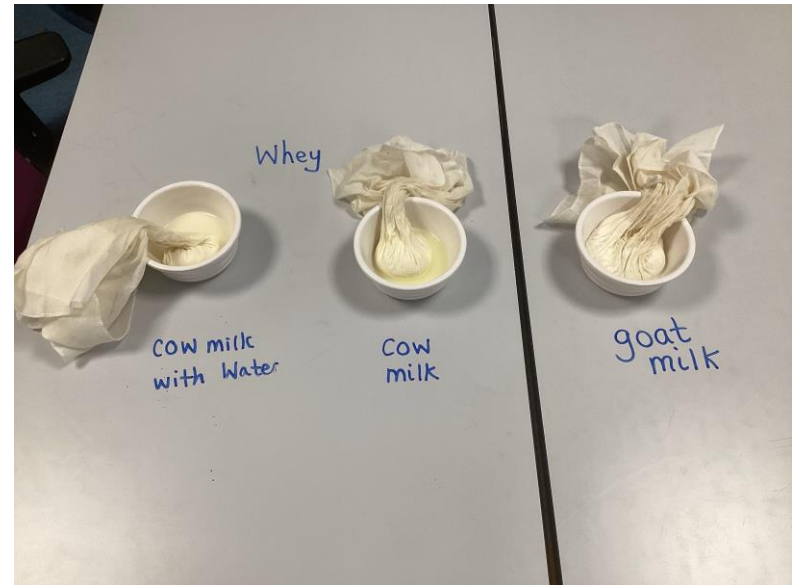
“Which Sugars Melt Ice the Fastest?”





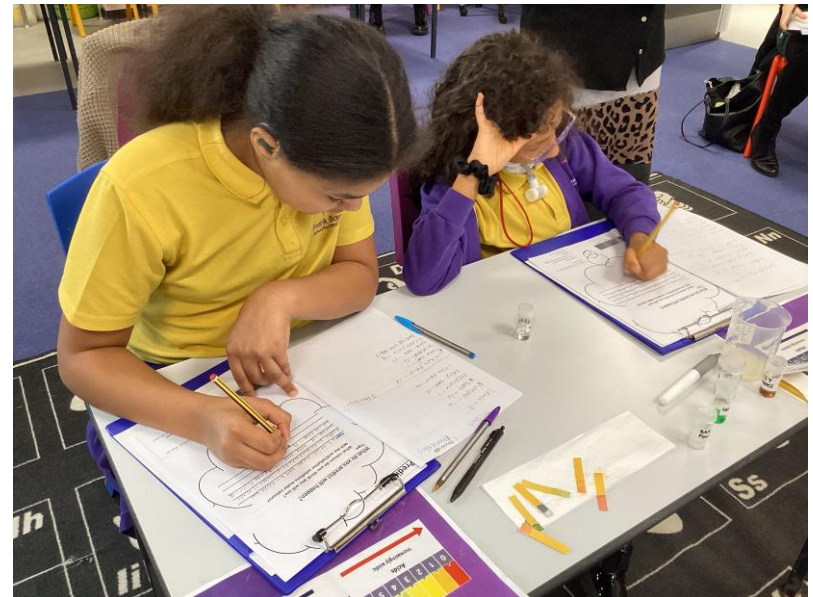
“How does milk turn to cheese?”





Friday 14th March – Tudor Class 2

“Chemical Stains”





Pupils' Feedback

Science Experiments for 'Change and Adapt'

We asked everyone to share feedback on the week:

I liked the flower changing colour, mine was purple. (Year 1)

I liked the rain cloud and magic milk experiments, I thought it was cool. (Year 5)

I liked predicting how long it would take the sugar to melt. (Year 2)

I liked the colour changing flower experiment and I can do it at home. (Year 5)

I liked seeing how milk changed to cheese. (Year 2)

Pupils' Feedback

Science Experiments for 'Change and Adapt'

We asked everyone to share feedback on the week:

I would have science as a real job in the future. (Year 2)

I was drawn to the light and reflection activity and the rain cloud experiment. (Year 5)

We asked pupils for words/signs they associated with Science Week:

Fantastic
Interesting
Absorbed
Loved it
Confident

Impressed
Curious
Proud
Wow
Amazed